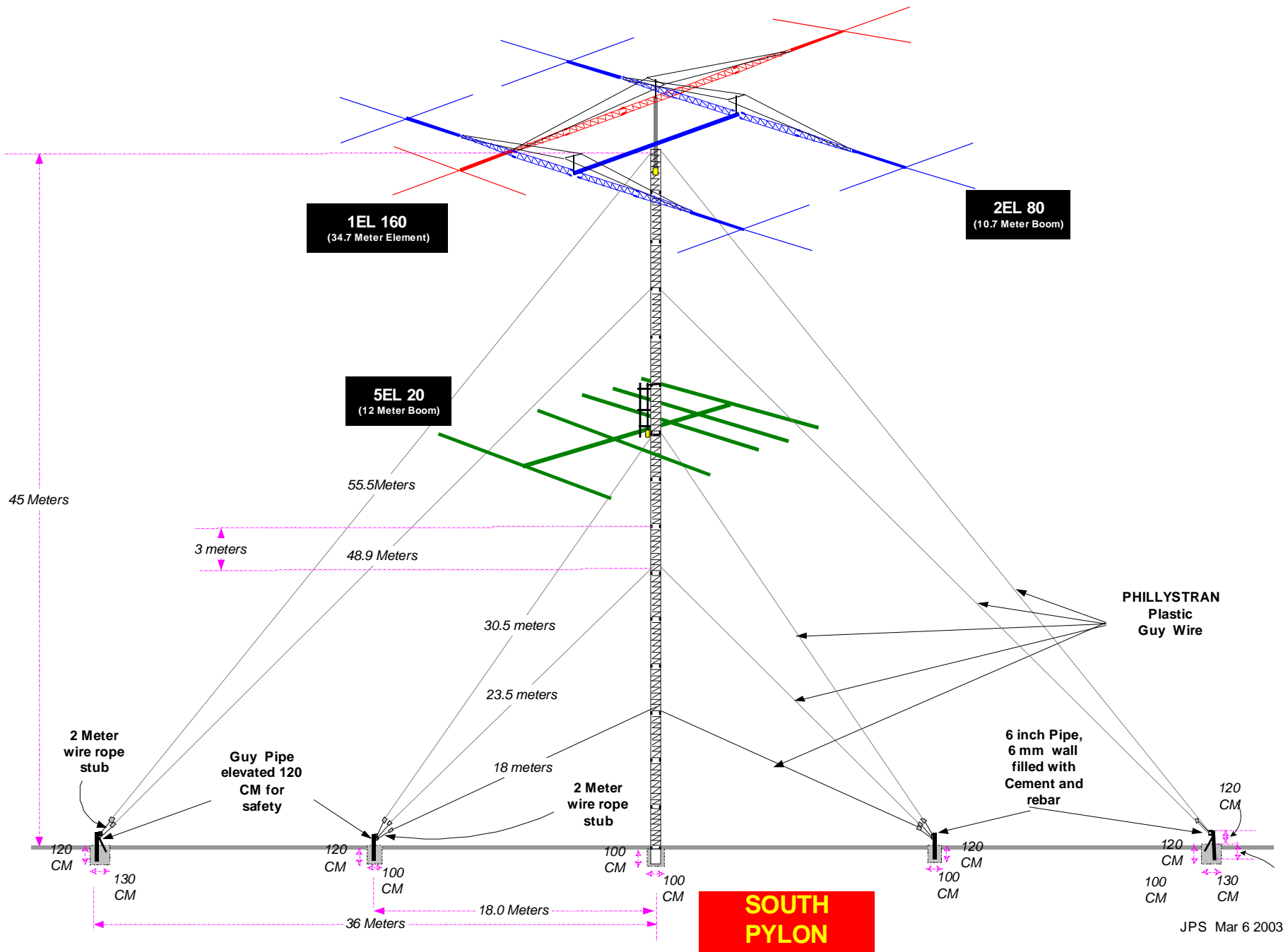
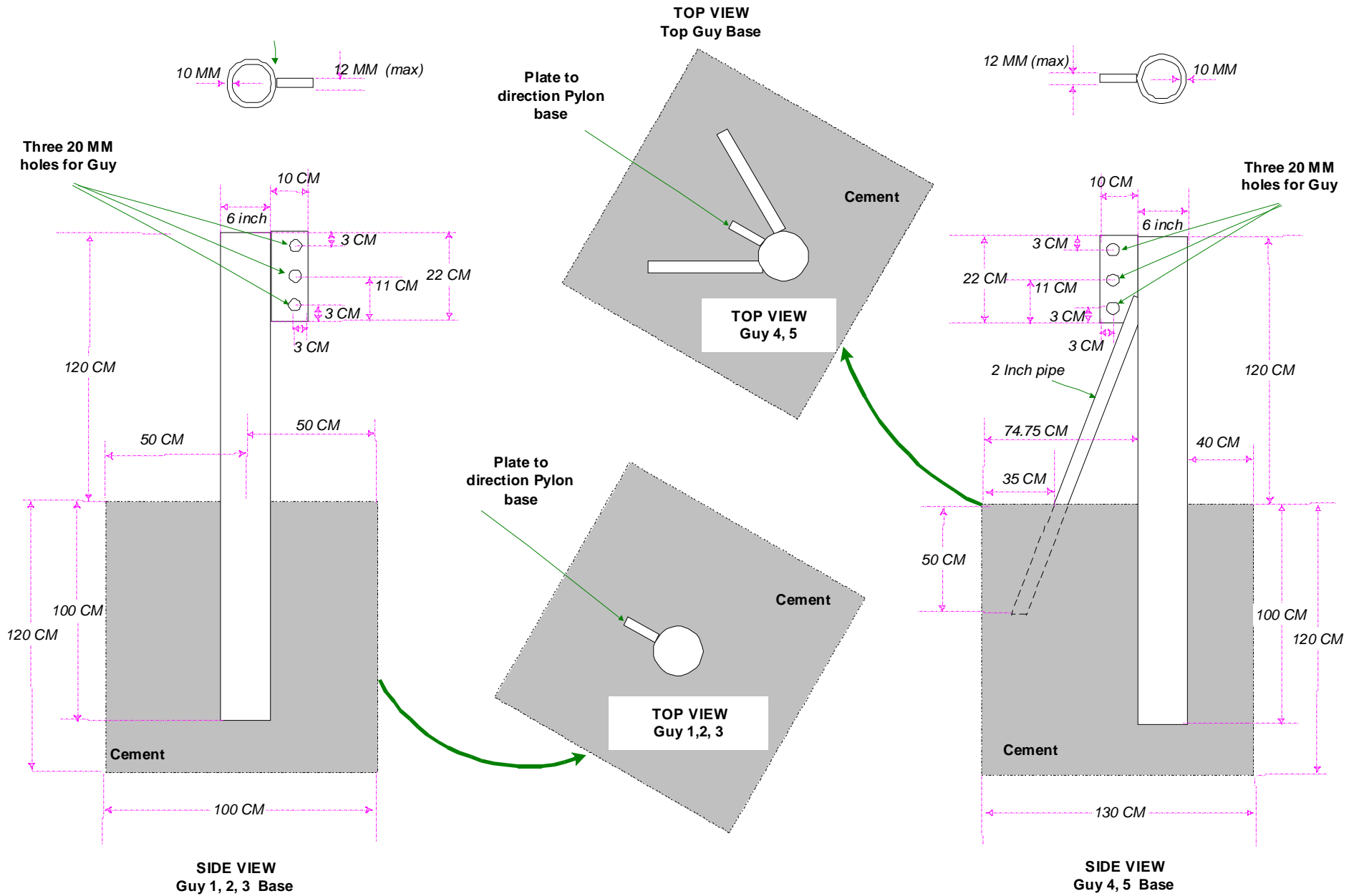


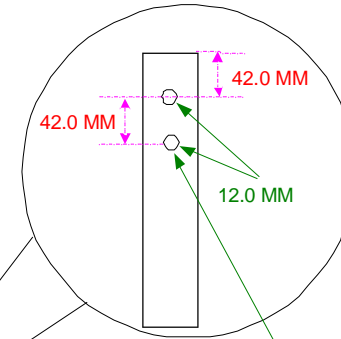
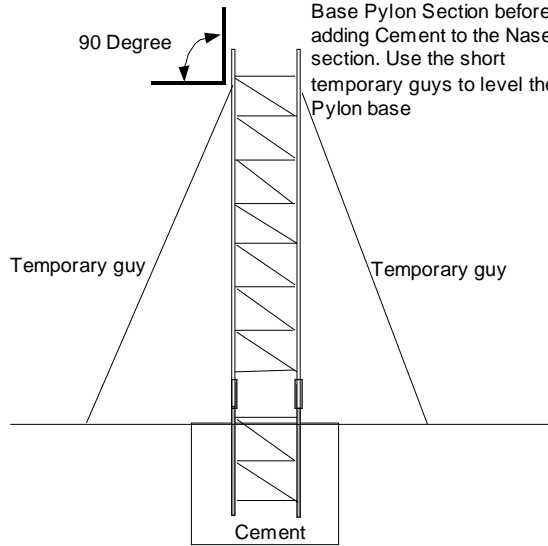
Pylon Layout



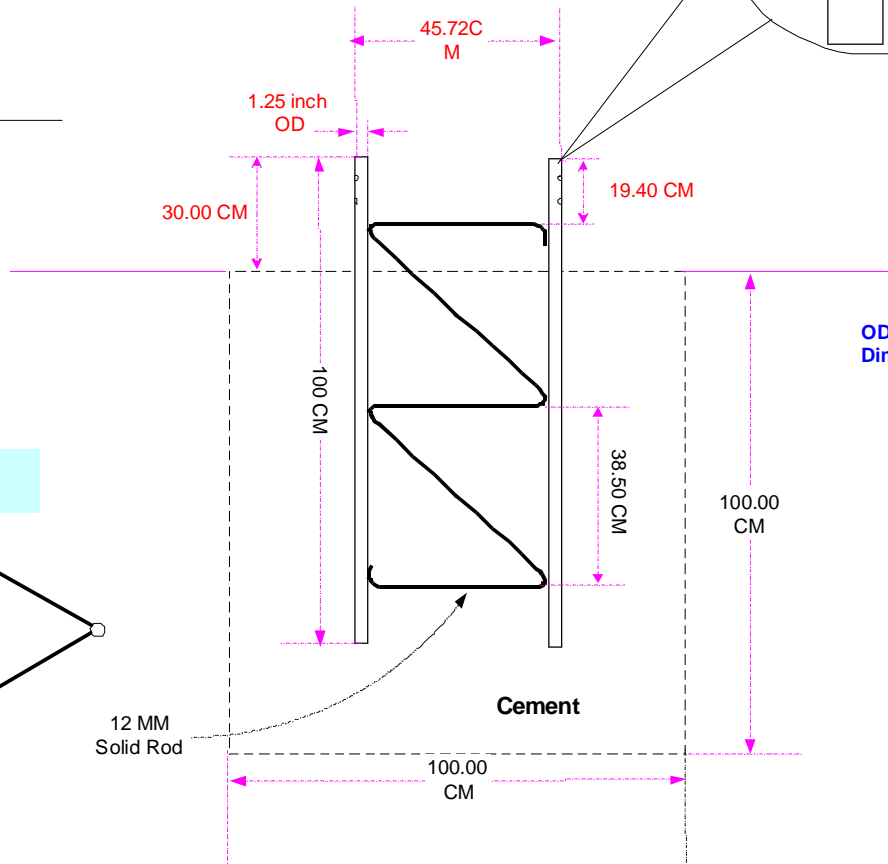


PYLON GUY BASE

To Install the Base Pylon section, Place one 3 meter Pylon section on top of the Base Pylon Section before adding Cement to the Nose section. Use the short temporary guys to level the Pylon base

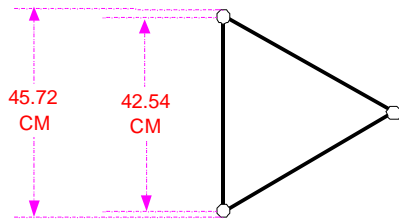


Size of Bolt Hole is 12MM



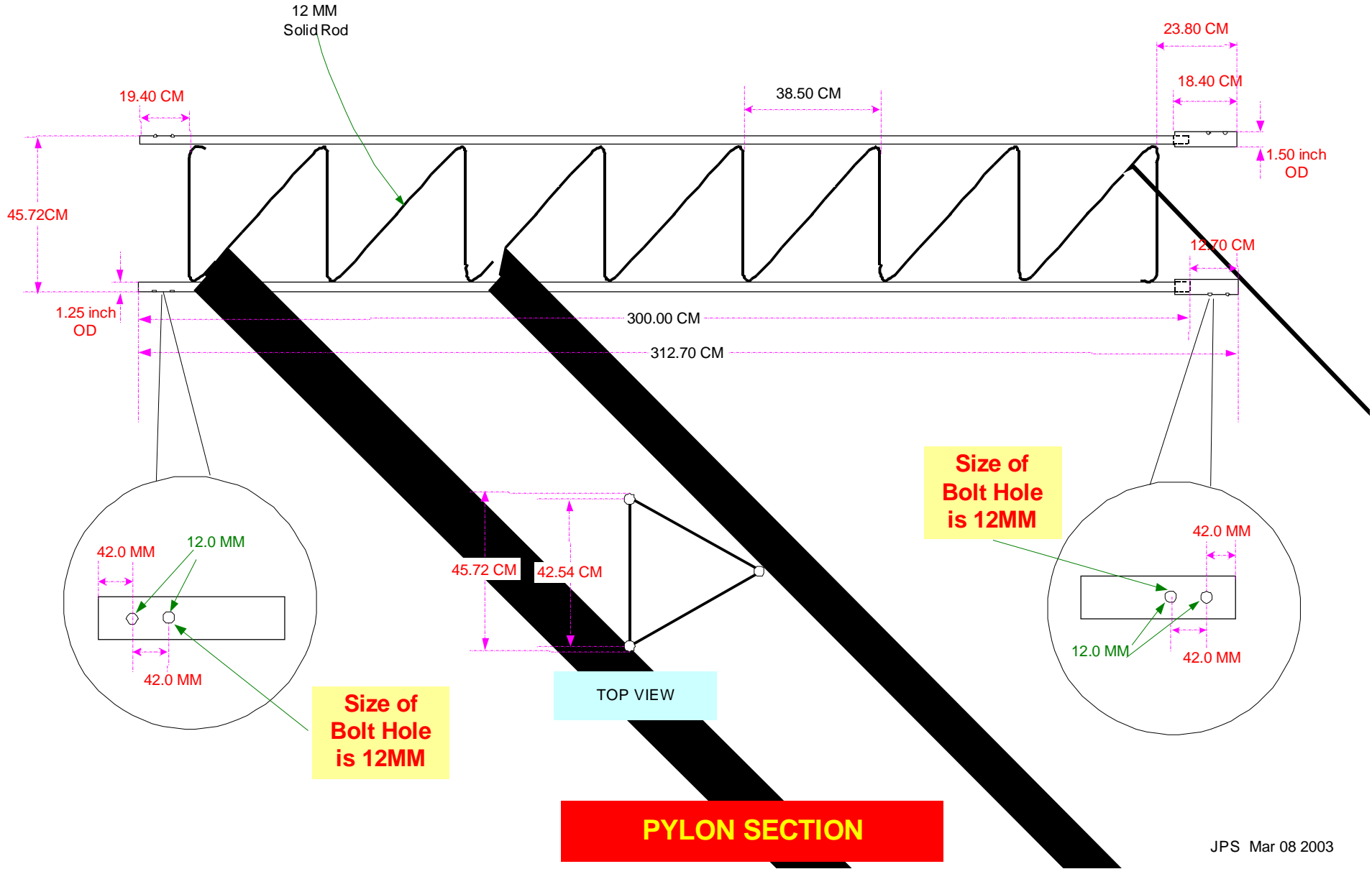
OD ⇒ Outside Diameter
Dimensions in Red should not change

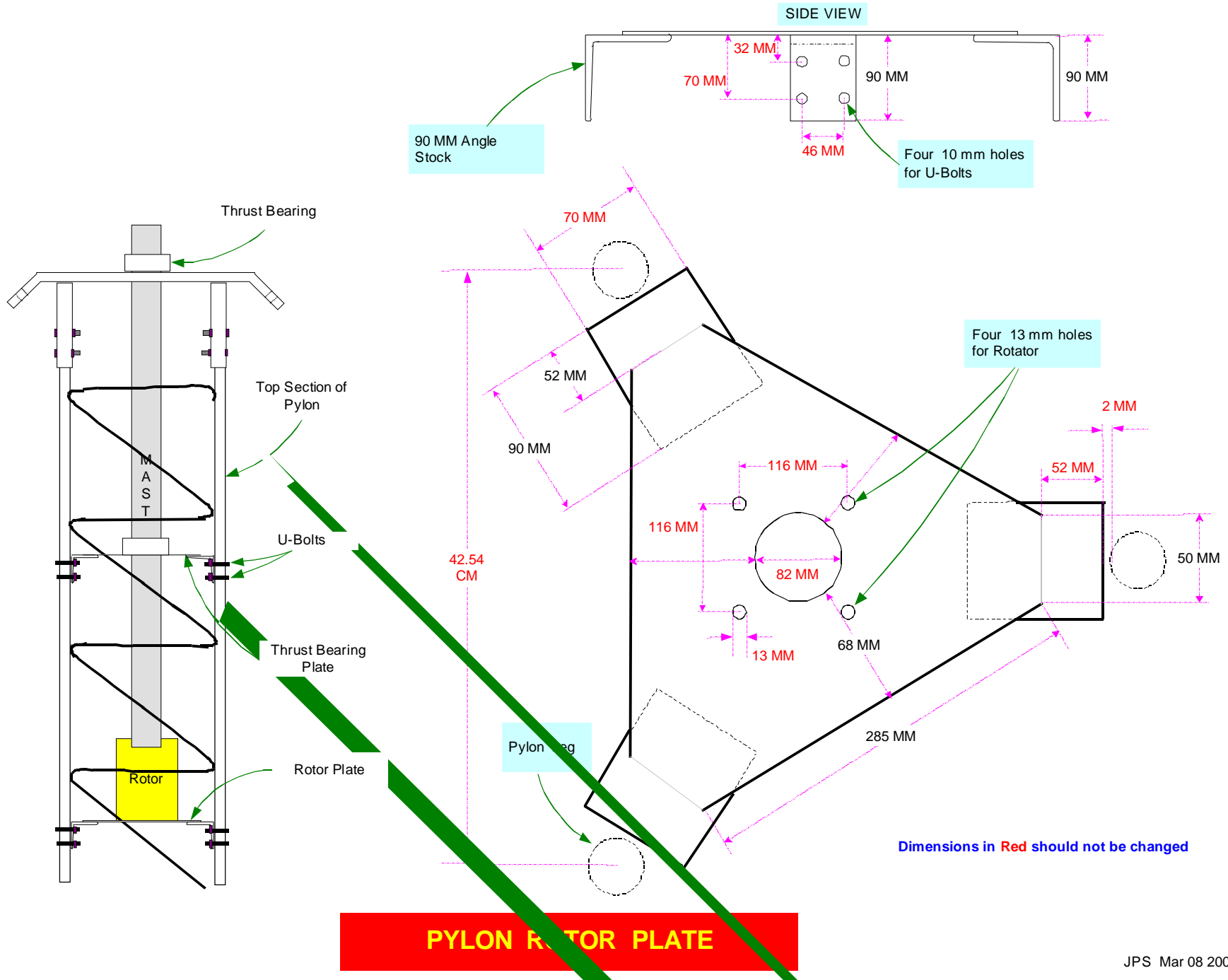
TOP VIEW

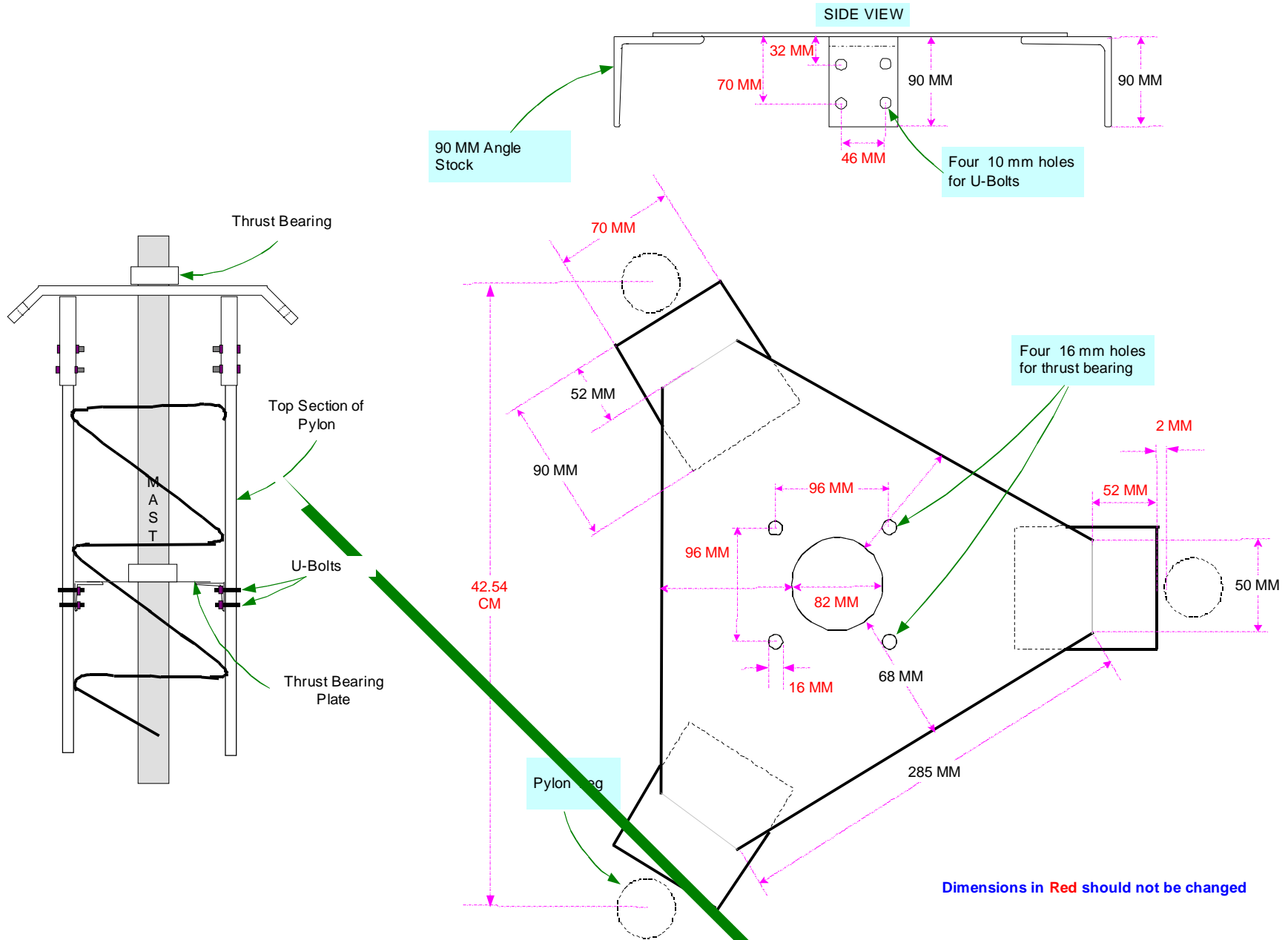


PYLON BASE

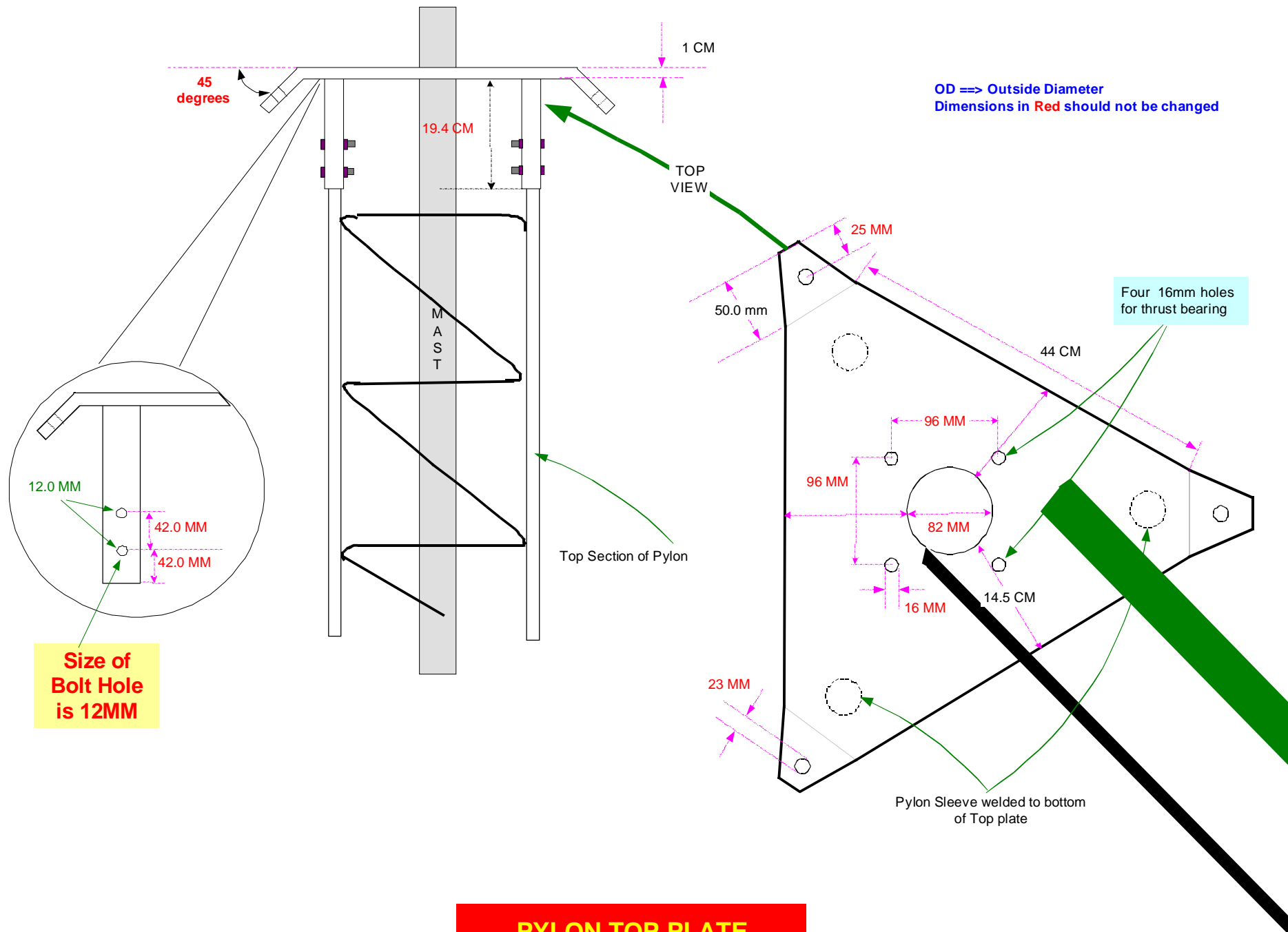
OD ==> Outside Diameter
Dimensions in Red should not be changed



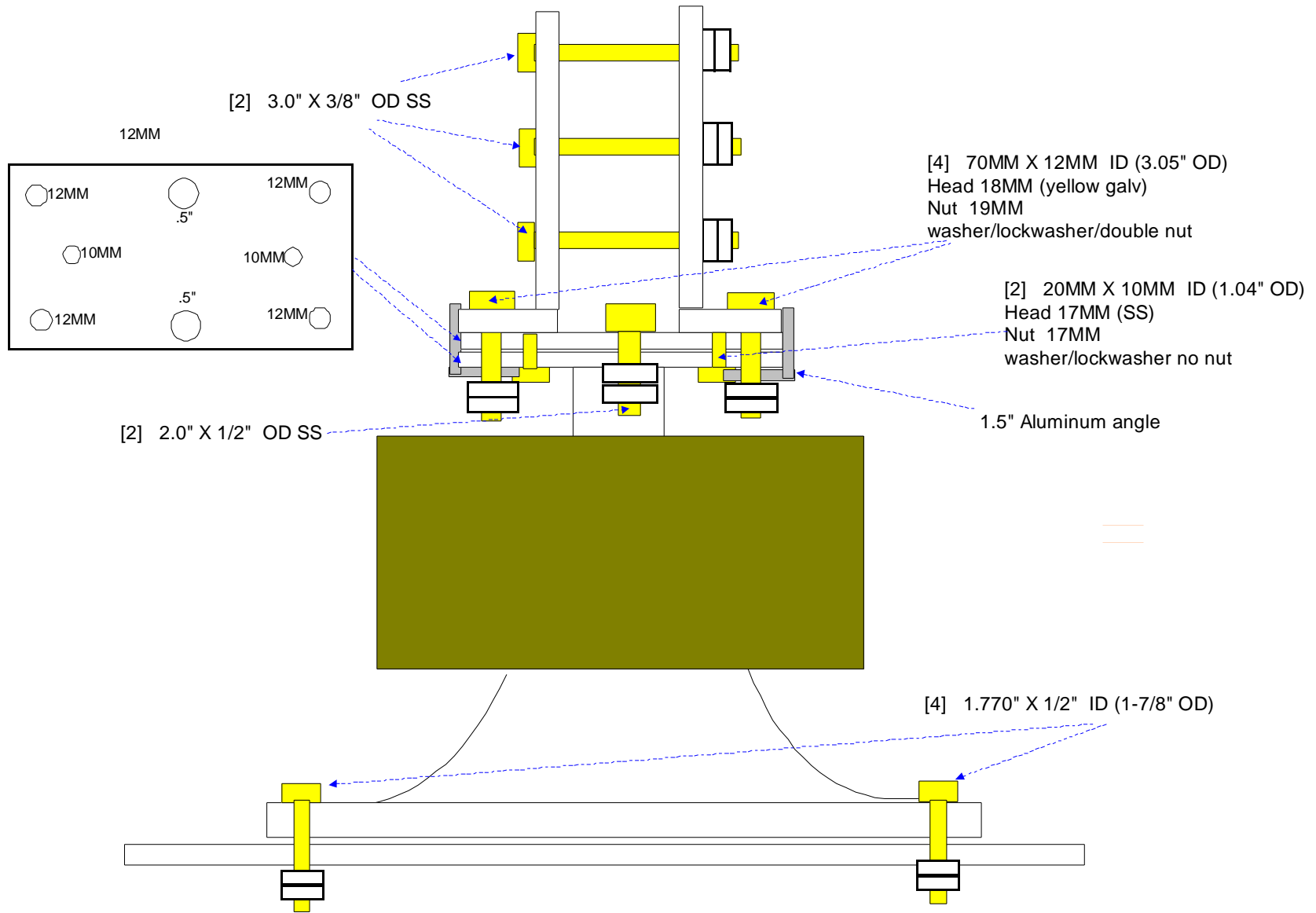




PYLON THRUSTBEARING PLATE



PYLON TOP PLATE



PST 71 Bolt Detail